



VGA to HDMI Adapter RCAD-11001
User Manual

Thank you for purchasing a quality Rosewill Product.
Please register your product at : www.rosewill.com for
complete warranty information and future support for your product.

Introduction

The VGA to HDMI Bridge(Rosewill VGA to HDMI Adapter) is designed to convert video (analog signal) and audio signals from a PC or Laptop to digital HDMI output of wide-ranged HDTV and PC resolutions, up to 1080p. The Rosewill VGA to HDMI Adapter is a plug and play device, automatically sensing the native resolution of the display and converter the computer's output to digital signal. The device will detect EDID displays and show the exact resolution.

The converter will take audio signal from the computer and embedded it into the HDMI signal output, so that you are able to enjoy both audio and video through one cable.

It supports multiple resolutions up to 1920x1080@60Hz. The Rosewill VGA to HDMI Adapter is USB powered therefore, will not require additional power supply.

Feature

- Display VGA signal out of Laptop or Desktop to a HDTV or Monitor
- Audio Compatible, the converter will take audio from the computer and embedded it to the HDMI output along with video signal
- Smart Firmware in the converter allows any PC resolution to be converted to a native resolution of the display up to 1080p
- Supports resolutions of up to 1920 x 1080
- HDMI, HDCP and DVI compliant
- USB Powered
- VGA, Audio and USB pig-tail cables are attached to the bridge
- Plug & Play

Product Requirement

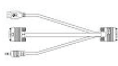
- Windows 2000, XP, Vista, Windows 7
- Computer w/VGA connection that supports for the following resolutions:
640X480(VGA),720X400, 800X600(SVGA), 1360X768(Wide XGA), 1024X768(XGA), 1280X720(HDTV 720P), 1280X768(WXGA),1440X900(WXGA+), 1280X1024(SXGA), 1680X1050(W SXGA+), 1600X1200(UXGA), 1280X800(WXGA), 1280X960(Quad VGA), 1920X1080(Full HD), 1920X1200(WUXGA)
- TV with HDMI connector that supports 1280X720P, 1920X1080P

Installation

1. Connect the VGA only end of cable to VGA port on the computer/laptop.
2. Connect the included Audio cable to the audio out port on the computer
3. Connect Pig-Tail end of VGA cable to Rosewill VGA to HDMI Adapter unit.
4. Connect the USB cable to USB port on the computer (for power purpose)
5. Connect the HDMI port to TV or monitor, and other end to Cable to HDMI unit.
6. See picture below for correct installation.



Computer



Composite Cable

VGA to HDMI
Adapter

HDMI Cable



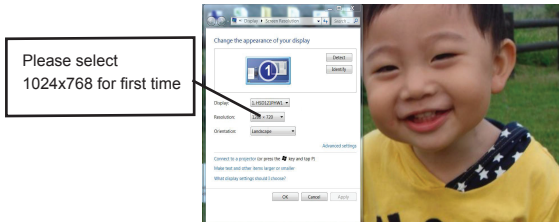
TV or Monitor

Set Up

1. You can hot plug for installation. After you connect the unit correctly, you should see blue LED on the unit flashing. That means units is powered but not yet sync with HDMI. (If you see solid blue LED and no screen on the TV probably means your TV doesn't support that resolution you choose. Please check TV manual for what resolution it supports.)

2. Right click mouse on the Window screen and choose "Screen Resolution" or "Display Property" you will see a screen like this.

Please select 1024x768 to make sure this unit running properly. Please wait for few second before signal sync with HDMI TV or monitor (Because some of the notebook can't send out certain resolution signals due to graphic card issues but almost 100% of them support 1024X768. If you can see the screen then the blue LED on the unit will led up solid. If you see blank screen but blue LED is solid that means your monitor or TV probably don't support that resolution you choose.) After it works with 1024x768 then you can choose whatever you prefer for your resolutions unless your TV or PC can not support.



Congratulation!!! You made it!!! You can enjoy playing any video or movies from your Laptop or PC to your HD TV or monitor.

Note

**Please note that this converter does not up/down convert the signal. Essentially, the resolution (supported by this device) that passes through the converter is the same resolution that goes out. Any aspect ratio control must be done directly from your HDTV or source. **

**This VGA to HDMI Bridge is not a scaler or scan converter. **

**Please check your manual and the Video Card's Control Panel to see if your laptop allows you to display both its monitor and another output. **

**In order to display a pixel by pixel image your video card has to be able to support the output resolution. Some video cards can't output HD resolutions so you may need to check your manual. **

Q&A

Q1. After completing installation, how do I know if it works?

Ans : If USB is powered up the unit, you will see blue LED flashing.
After HDMI signal sync with PC, the blue LED will stay led up.

Q2. LED is flashing and I got no picture on my screen, what happen?

Ans : Please open "Control panel", then you select "Appearance and personalization". Then select "Adjust screen resolution". Under resolution, please select 1024X768. Wait for few seconds for HDMI to sync with your PC. LED should be solid all time. Then you will see your screen. If you want to select other resolution, please reference what your PC or laptop supports output resolutions and monitor or TV supports input resolutions. Please noted, only both sides supported resolution will be shown on the screen.

Q3. If for some reasons unknown Answer 2 did not work, what should I do?

Ans : (1). please double check on the cable connection, sometimes is confusing on VGA cable side. Please connect the only VGA connector side to the device. Connect the pig-tail VGA, USB and audio side to the PC.
(2). Please restart computer, some graphic card require restart to sync video with monitor.
(3). If described answer2 and 3 still doesn't work, please visit rosewill.com for further helps.

Q4. If my PC graphic card support 1080P but my monitor doesn't, can I still enjoy 1080p performance?

Ans : no, because we are converting the analog signal to digital signal. We are not scaling signal up or down. To support a particular resolution, both PC or notebook graphic card and monitor or TV has to support this resolution to able to see. If PC or notebook has an on-board graphic card, since it does not support very wide range of resolutions, we recommend to use 1024X768 or 720p instead of trying 1080p right away.

Q5. I already use this unit and video port is used up, I want to use more displays. What can I do?

Ans : Rosewill has another product called "Rosewil USB to HDMI Adapter". You can use USB port to gain extra video sources to display. So you don't have to buy another expensive graphic card.

Quick Installation Guide

Equipments need for installation

- TV or monitor (with HDMI port)



- Computer or notebook
(VGA port is needs on pc or notebook)



- Composite Cable :
 - ① VGA(connect to VGA 2 HDMI)
 - ② Audio(to Audio port on Comp.)
 - ③ VGA(to VGA port on Comp.)
 - ④ USB(to USB port on Comp.)



- HDMI CABLE



Installation

Step1

Prepare 1 HDMI cable and take Rosewill VGA to HDMI Adapter out.
Connect HDMI cable to your TV or monitor.



Step2

Connect the other side of HDMI cable to Rosewill VGA to HDMI Adapter device.



Step3

Take out 3-1 composite cable.
Composite Cable VGA ③ connects to VGA port on computer or notebook.



Step4

Composite Cable USB ④ connects to USB port on computer or notebook.



Step5

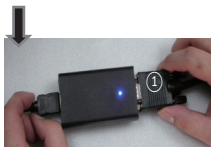
Composite Cable Audio ② connects to Audio port on computer or notebook.



Installation

Step6

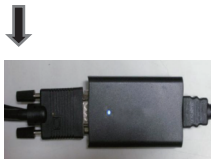
Other side of 3-1 Composite Cable has one VGA port. Take that VGA① connect to Rosewill VGA to HDMI Adapter device.



Step7

Check status LED on Rosewill VGA to HDMI Adapter

LED Status	Description
No light	No Power
Flashing	Power go thru
Solid	HDMI signal sync

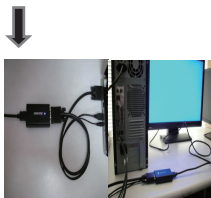


Step8

Installation finished. Check LED status dark, flashing or solid.

(If LED is solid, you are good to use.)

(If not, please follow set up procedure next.)



※ If you see solid LED and no screen on the TV probably means your TV doesn't support that resolution you choose.

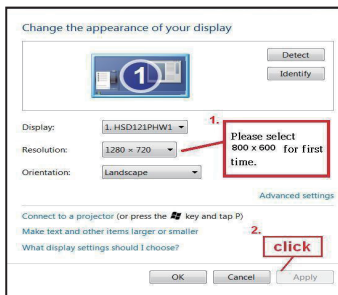
Please check TV manual for what resolution it supports.

Set Up Your Resolution (For LED status is blue flashing)

Step1

For Win XP or older, on Desktop mouse press right button→Property →Setting then set resolution to 800x600, click “apply”.

On Win7, choose Resolution after right click on the desktop.



*Note: If you are using desktop computer, your set up is completed. You should be able to see your screen with in 5 seconds. If you want to use other resolution, you can choose now. If TV or monitor goes blank screen then your TV probably doesn't support that resolution.

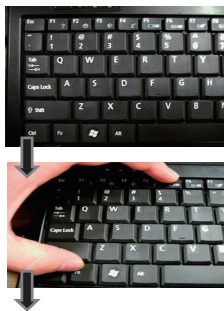
Step2

(if you are using a notebook)

Looking for "Fn" and "F5"(switch monitor)
(Different notebook could have different function key)

Step3

Holding "Fn" and "F5" for switching monitor.



Step4

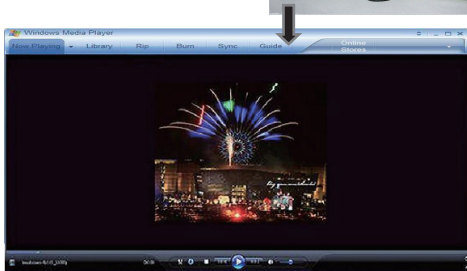
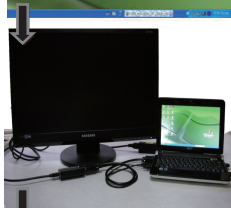
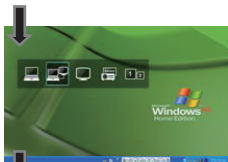
Please select project in both screens.
(Because some of notebook will not send out VGA signal unless you do so)

Step5

1. Signal sending out needs several seconds, please be patient.
2. If still no screen, check connection again.
3. If you see blue solid LED on device, then means your TV doesn't support current resolution.

Step6

If everything is right, then you will see both screens on.



Congratulation!!!! Now you can enjoy your show or movie on your big screen Video Display.